



Site

Sri Rama Temple Bells, Datthashramam Road, Adarshnagar, Sanivarapu peta, Eluru-534003, West Godavari District, Andhra Pradesh

Office

No: 23B-6-66, Sivakesavaalayam Street (Chinthachettu Road), R.R. Peta, Eluru-534002, West Godavari District, Andhra Pradesh


Structural Consultant

Mr. A. Sivakumar
(M-Tech-Structures)
Satavahana nagar, Eluru-534003
Mobile: +91-99639-12211
+91-94929-12211

Vaastu Consultant

A. Kalyanagovindaacharyulu
Ph: +91-99490-72498
Hanuman Junction

Brochure concept & design

 Bangalore - 560097
Ph: +91-99451-98337

Book your Spaces

Sales: +91-94941-90000 / +91-90522-00022

Email: sales@prasiddhilifespaces.com

www.prasiddhilifespaces.com



SRI RAMA

Temple Bells

the night shot



AN
INVITATION TO
LIVE A FULFILLED
LIFE

An Alluring abode for
a tranquil and peaceful living





YOUR DREAM HOME UNVEILED

A discerning address for 84 Elite residents..

Sri Rama Temple Bells stands tall at G + 5 floors and a basement, meticulously planned spacious apartments with ample ventilation that are Vaastu compliant and with state of the art amenities and facilities to experience an unmatched lifestyle





CELEBRATIONS UNLIMITED

With an abode in Sri Rama Temple Bells, every day is a festival.
Fun has no limit... when and what ever the occasion is





INSPIRING LIFESTYLE

Not just fun and needs addressed, peace and leisure is a part of every abode
and you can become the living inspiration for the rest.





BRINGING GENERATIONS TOGETHER

Nurtured tactically to suit every generation's lifestyle..
be it traditional or modern, with top class
amenities and facilities in place





SPECIFICATIONS



Structure	Basement + Ground + 5 storied RCC framed structure with light weight cellular bricks 6” thick external walls and 4” thick internal walls.
Car Parking	Covered car parking in basement, one for each apartment.
Flooring	Foyer/living/dining/bedrooms: superior quality vitrified tiles flooring and skirting.
Toilets	Superior quality anti-skid ceramic tile flooring. Superior quality ceramic glazed wall tiles up to 7’ height. Jaguar make bath fittings. Jaguar sanitary ware. Provision for geyser and exhaust fan in all toilets.
Staircase	Superior quality flooring with Ms hand railing.
Kitchen	Superior quality Vitrified tiles flooring. Superior quality ceramic glazed tiles dado up to 2’ height from kitchen Counter top. 20 mm thick granite counter slab suitable for modular kitchen. S.S.sink (standard size).
Common Areas	Granite / superior quality vitrified / rectified tiles flooring and skirting
Balcony/Utility	Superior quality antiskid ceramic tile flooring and skirting. Parapet wall / MS grill up to 3 ‘3”ft level in balcony and Utility.
Joinery	Teak wood frame & shutters with Melamine polish on both sides along with high quality hardware/ fittings For Main door hard wood frame with modular skin shutters with Laminated sheet both sides. Along With high quality hardware / fittings for internal doors. 2 track UPVC glazed windows with mosquito mesh and safety Grills for windows.
Painting	Birla/equivalent wall putty finish with Berger premium emulsion paint for internal walls with roller finish. Enamel paint For both frames and shutters for internal doors. Exterior weather Proof coat Berger paint for exterior walls.
Lifts	2 nos of lifts (reputed make) of suitable size.
Back up UPS	Electrical Wiring provision for Back up
Electrical	Legrand modular switches and anchor fire Retardant electrical wires. 24x7 DG back up for common areas/pumps/lifts. And telephone line connections for living and master bedroom. A/c provision for all bedrooms. Provision for Washing machine in utility, provision for water purifier, microwave, chimney & mixer/grinder points in kitchen. Intercom facility
Landscape	Beautiful Landscaping to provide more greenery inside the community With Walking track around the building.
Water	2nos. bore well with overhead tank of suitable size with Ring main Plumbing designed.
Amanitiy’s	Badminton Court ,Children’s Play Area, STP,Amphetheatre,Temple,6’ Wide Walking track, GYM, Party hall



MASTER LAYOUT PLAN



AMENITIES & FACILITIES

- PARTY HALL
- PLACE OF WORSHIP
- WALKING TRACK
- LANDSCAPING
- GYMNASIUM
- CHILDREN PLAY EQUIPMENT
- AMPHITHEATER
- RAIN WATER HARVESTING
- POWER BACKUP
- CAR PARKING
- INDOOR GAMES
- PROVISION FOR CCTV SURVEILLANCE AND ENTRANCE





AT THE SPIRITUAL VICINITY

Enlighten the soul with spiritual centers
like Holy Sri 'Nam' Dattha natha
Kshetram, Ayyappa swamy temple
at your vicinity





Synonym to its name a Prasiddhi abode will be brimming with life and is invariably planned and built to top class standards. From specifications and fixtures to finishes, you can experience the quality in every square foot of your abode.

Aesthetically and spaciouly designed apartments with well connected lifts, staircases, corridors, amenities and facilities at Adarshnagar, Sanivarapu peta, Eluru, "Sri Rama Temple Bells" indulges you over a life time experience.



LOCATION HIGHLIGHTS

UPCOMING POSH AND PEACEFUL LOCALITY

SURROUNDED BY VAST GREENERY

PROXIMITY TO NATIONAL HIGHWAY-5

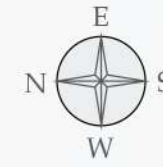
AMIDST SPIRITUAL AND PREMIER EDUCATIONAL INSTITUTIONS

AN UPCOMING SMART CITY WITH NEAR LIMITS OF CAPITAL AMARAVATHI.

WELL CONNECTED BY ROAD, RAIL AND AIR



FLOOR PLANS

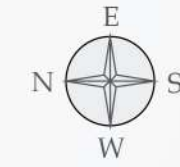
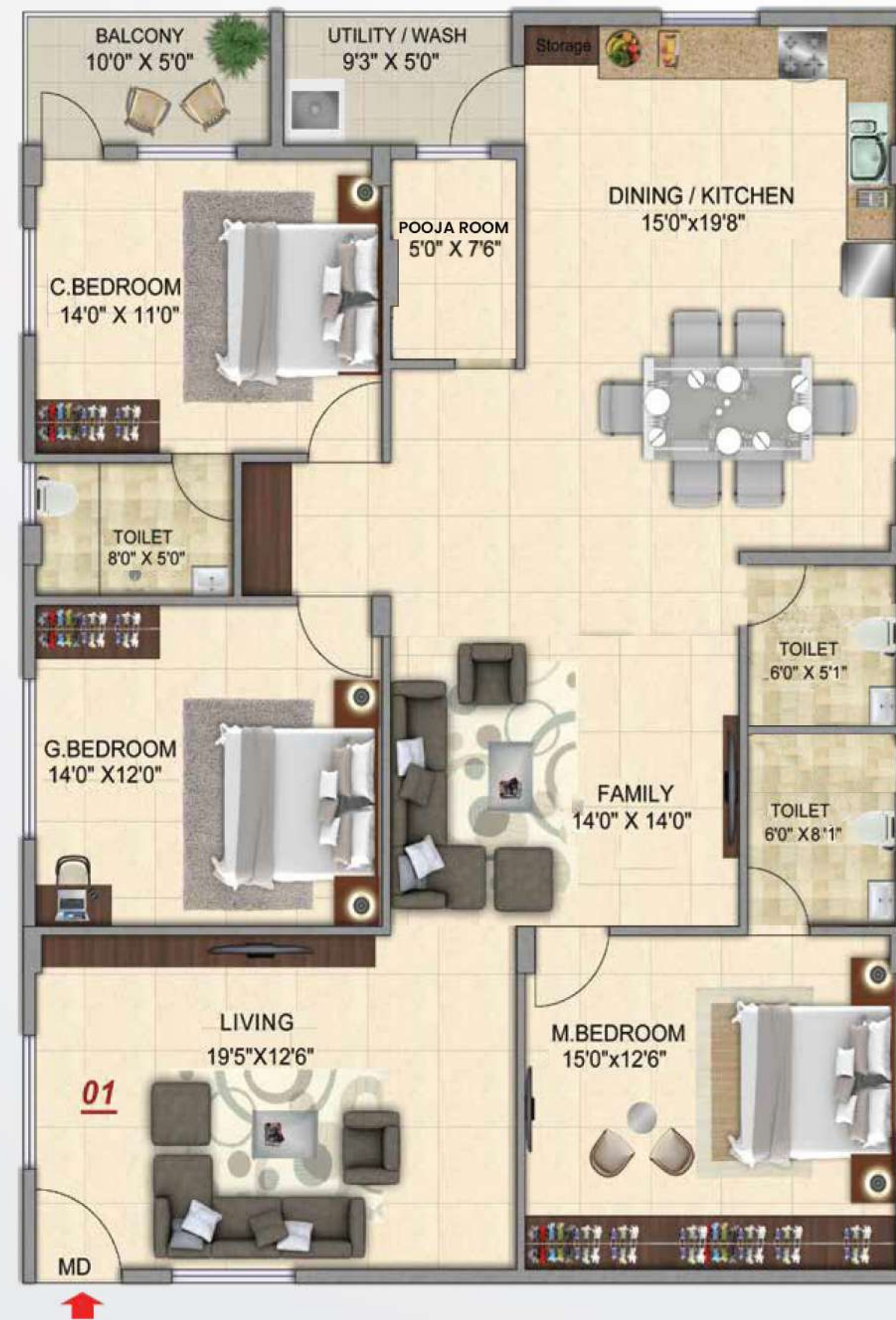


Type - A (3BHK)
Area: 2123. Sq.ft
Facing: East



- Main door
- Living
- Kitchen
- Family/Dining
- Home Theater
- Master Bedroom
- Children Bedroom
- Guest Bedroom

FLOOR PLANS



Type - B (3BHK)
 Area: 2123. Sq.ft
 Facing: West



- Main door
- Living
- Kitchen/Dining
- Family
- Master Bedroom
- Children Bedroom
- Guest Bedroom

FLOOR PLANS



Type - C (2BHK)
Area: 1425. Sq.ft
Facing: East



- Main door
- Living
- Kitchen
- Dining
- Master Bedroom
- Children Bedroom

FLOOR PLANS



Type - D (2BHK)
 Area: 1425. Sq.ft
 Facing: West



- Main door
- Living
- Kitchen
- Dining
- Master Bedroom
- Kids Bedroom
- Foyer



YOUR NEXT PRESTIGIOUS ADDRESS

An abode in Sri Rama Temple bells is a
prestigious address to showcase in an
upcoming smart city





PROJECTS OF PRASIDDHI



Cloud9 - Twin Villas
Electronic city, Bengaluru



Commanders Pinnacle
Intl. Airport Road, Bengaluru



Aqua Opal
ORR, Hebbal, Bengaluru



Cloud9 - Independent Villas
Electronic city, Bengaluru



Ascent
Tatanagar, Bengaluru



Park Dale - Phase-I & II
Doddaballapur Road, Bengaluru



Park Vista - Phase-I & II
Doddaballapur Road, Bengaluru



Aspirations - Phase-I, II & III
Intl. Airport Road, Bengaluru



LOCATION MAP





Prasiddhi Group, the business conglomerate with varied interest in property development, infrastructure and wind power with its corporate office at Bengaluru has an incredible track record in property development with a constructed area of more than one million Square feet of apartments, villas & commercial spaces and five million square feet of plotted communities and few thousands of happy and satisfied customer base.

Quality construction and delivery on time with top notch finishes and fit outs matching to the customers' expectations is the core competence and philosophy of Prasiddhi. Emphasis on greenery and eco-friendly policies of construction showcases the social responsibility of the group. With an experience of over a decade on the Bengaluru urban landscape, the group is diversifying to the promoter's home town at Andhra Pradesh.



TESTIMONIALS



I stay weekends at my villa in PRASIDDHI CLOUD9. It's like a hangout at a resort all times in PRASIDDHI CLOUD9. All the amenities and facilities along with the landscaping are well maintained. Prasiddhi Cloud9 is like a home in a resort. It is well within the city yet away from the commotion and noise of the daily life. It is a beautifully maintained community with all amenities that caters to members of all age groups of my family - I feel I am on Cloud9 when in Cloud9.

*Mr. Paneesh Rao
Sr. HR Executive in a Pvt Ltd company*



I was planning to relocate to INDIA from U.S. and was looking for a gated community reminiscent to my living standard and ambience of my home in U.S. I have found PRASIDDHI CLOUD9 matching to my requirement and I have bought two villas in the project. Residing in PRASIDDHI CLOUD9 is a calm and pleasant experience.

*Mr. Anuvratha Arora
Ex-Amazon,
Co-Founder of Move-in-Sync company*

